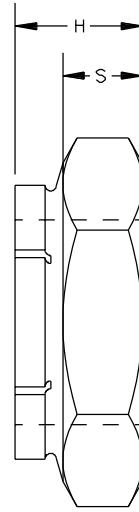


STYLE A



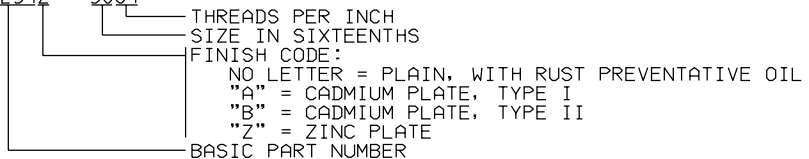
STYLE B

EITHER STYLE TO BE SUPPLIED AT SPS' OPTION

MARK "SPS"  
LOCATION OPTIONAL  
AS SHOWN. MULTIPLE  
MARKING PERMITTED

DASH NUMBER	THREAD	C REF	H MAX/MIN	S REF	W MAX/MIN	TENSILE STRENGTH REF	APPROX WEIGHT LBS. /100
2605	1-5/8-5.5 NS-2B	2.899	.947/.927	.595	2.564/2.549	92,000	88.5
2612	1-5/8-12 UNJ-3B	2.899	.947/.927	.595	2.564/2.549	117,000	76.4
2805	1-3/4-5 UNC-2B	3.114	.994/.974	.638	2.752/2.737	110,000	98.5
2812	1-3/4-12 UNJ-3B	3.114	.994/.974	.638	2.752/2.737	137,000	96.7
3005	1-7/8-5 NS-2B	3.328	1.073/1.053	.695	2.940/2.925	135,000	120.9
3012	1-7/8-12 UNC-3B	3.328	1.073/1.053	.695	2.940/2.925	158,000	114.4
3204	2"-4.5 UNC-2B	3.542	1.140/1.110	.745	3.127/3.112	156,000	146.5
3212	2"-12 UNJ-3B	3.542	1.140/1.110	.745	3.127/3.112	180,000	137.7
3604	2-1/4-4.5 UNC-2B	3.970	1.265/1.235	.820	3.502/3.487	203,000	196.5
3612	2-1/4-12 UNJ-3B	3.970	1.265/1.235	.820	3.502/3.487	230,000	148.5
4004	2-1/2-4 UNC-2B	4.306	1.390/1.360	.940	3.877/3.782	250,000	270.4
4012	2-1/2-12 UNJ-3B	4.306	1.390/1.360	.940	3.877/3.782	287,000	254.4
4404	2-3/4-4 UNC-2B	4.734	1.515/1.485	1.040	4.252/4.157	308,000	353.9
4412	2-3/4-12 UNJ-3B	4.734	1.515/1.485	1.040	4.252/4.157	349,000	334.7
4804	3"-4 UNC-2B	5.162	1.640/1.610	1.140	4.627/4.532	373,000	459.9
4812	3"-12 UNJ-3B	5.162	1.640/1.610	1.140	4.627/4.532	418,000	437.1
5204	3-1/4-4 UNC-2B	5.590	1.775/1.745	1.238	5.002/4.907	443,000	569.9
5212	3-1/4-12 UNJ-3B	5.590	1.775/1.745	1.238	5.002/4.907	493,000	543.0
5604	3-1/2-4 UNC-2B	6.018	1.890/1.870	1.340	5.377/5.282	520,000	703.3
5612	3-1/2-12 UNJ-3B	6.018	1.890/1.870	1.340	5.377/5.282	573,000	672.4
6004	3-3/4-4 UNC-2B	6.446	2.030/2.000	1.430	5.752/5.657	603,000	857.3
6012	3-3/4-12 UNJ-3B	6.446	2.030/2.000	1.430	5.752/5.657	661,000	821.7
6404	4"-4 UNC-2B	6.874	2.140/2.110	1.530	6.127/6.032	693,000	1,029.5
6412	4"-12 UNJ-3B	6.874	2.140/2.110	1.530	6.127/6.032	754,000	988.7

- MATERIAL: STEEL, (.15 CARBON MINIMUM).
- FINISH: PLAIN, SUPPLIED WITH A RUST PREVENTATIVE OIL.  
CADMIUM PLATE PER QQ-P-416, TYPE I, CLASS 2.  
CADMIUM PLATE PER QQ-P-416, TYPE II, CLASS 2.  
ZINC PLATE PER ASTM B633, TYPE II.
- PERFORMANCE: LOCKING TORQUE PER NASM25027 EXCEPT LIMITED TO 5 REUSE CYCLES.  
FOR SIZES LARGER THAN 2.500" DIAMETER USE THE 2.500" VALUES.
- THREADS: UNC-2B PER MIL-S-7742  
UNJ-3B PER AS8879
- PART NUMBER: 54254Z - 3604



INFORMATION ON THIS DOCUMENT IS A TRADE SECRET, PROPRIETARY, AND SHALL NOT BE USED OR REPRODUCED IN WHOLE OR IN PART WITHOUT WRITTEN AUTHORIZATION OF SPS TECHNOLOGIES.

TOLERANCES ±.010 AND ±2° SURFACE ROUGHNESS 125 UNLESS OTHERWISE NOTED DRAWN BY: STEVE FOSTER APPROVED: M ZATAVESKI APPROVED: M LAWLER	THIS PRODUCT DRAWING IS DRAFTED IN ACCORDANCE WITH ASME Y14.5M DATE: 8/15/95 DATE: 4/25/2000	<b>SPS</b> TECHNOLOGIES	FSCM NO. 56878 CUSTODIAN: JENKINTOWN, PA.	STANDARDS AND SPECIFICATIONS NASM25027 EXCEPT AS NOTED PART NUMBER: 54254( )-( ) SHEET 1 OF 1
TITLE		GIANT SIZE "FLEXLOC" SELF-LOCKING NUT THIN STYLE		